

# EVERYTHING IS PLANNED FOR YOU!

## Valentine's Day Rhyming Hearts

This Valentine's Day-themed activity is a fun, hands-on way for children to practice recognizing rhyming words. Each heart puzzle features two halves with matching rhyming words, helping children build phonological awareness through playful learning. It's perfect for preschool and kindergarten.

### Learning Objectives:

- Rhyming Awareness:** Students will identify and match words that rhyme, building foundational phonological awareness skills.
- Word Recognition:** Students will improve their vocabulary and ability to visually recognize words.
- Fine Motor Practice:** Students will strengthen their fine motor skills by manipulating the puzzle pieces to make matches.

### Preparation:

- **Print** the heart puzzle pieces on standard paper or cardstock for durability.
- **Laminate** the pieces for reuse.
- **Cut out** the hearts then cut along the zigzag lines to separate the heart halves into individual puzzle pieces.

### How to Use:

Spread out the puzzle pieces on a table or learning surface. Choose as many pieces as are appropriate for the students' capabilities. They choose one half of a heart and identify the picture while reading the word aloud (e.g., "frog"). To complete the heart, they search for the matching rhyming word and picture (e.g., "dog"). Once a match is made, encourage students to say both words aloud (e.g., "frog and dog") to reinforce the rhyme. Gradually increase the number of pieces available as students gain confidence with the activity.

### Other Fun Uses:

- **Sensory Bin Match:** Place the picture cards in a sensory bin and have students search for them to match the rhymes.
- **Create Your Own Rhymes:** Encourage students to brainstorm or draw new rhyming words to add to each pair.
- **Rhyme Story:** Once puzzles are matched, encourage students to write the rhyming pairs in silly sentences or stories.

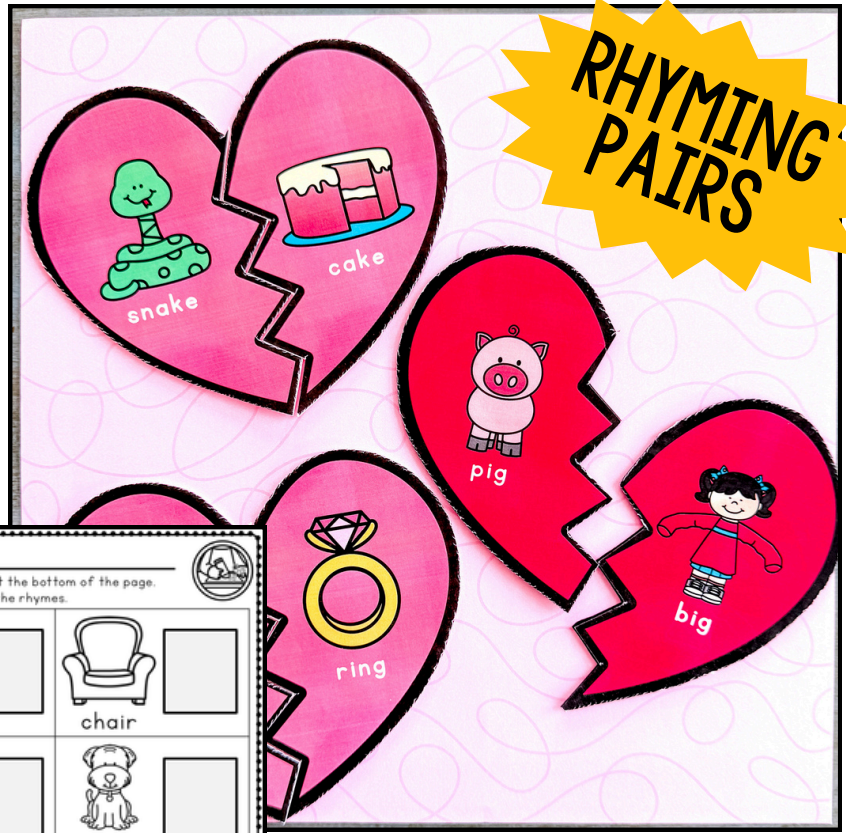
**EASY DIRECTIONS**

**RHYMING PAIRS**

Step-by-step directions for the activity.







Extension ideas

**Storage Tips:** Keep the cards in a small basket or on a tray for easy access. Store in a zippered bag when not in use.



Name \_\_\_\_\_

Cut apart the pieces at the bottom of the page. Use them to complete the rhymes.

 car	 chair
 moon	 dog
 house	 bear

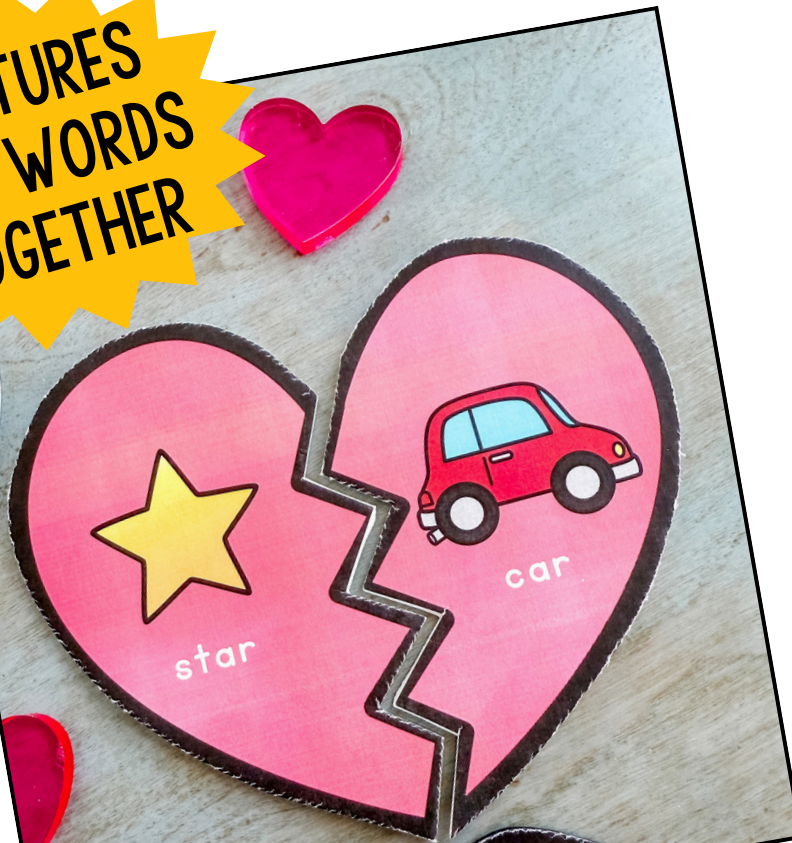
©Play to Learn Preschool

**PRACTICE SHEET**

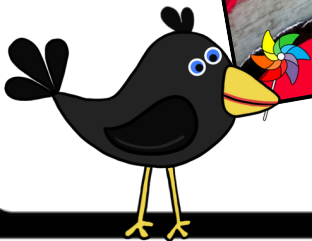


# EMERGENT LITERACY

PICTURES  
AND WORDS  
TOGETHER



PRINT,  
MAT,  
CUT, & GO



# LOOKING FOR EVEN MORE VALENTINE'S DAY FUN?

**SAVE!**

**SAVE \$ WITH A BUNDLE**

Peek-A-Boo  
Sweet Treats Alphabet Envelopes  
Editable February Name Practice  
Valentine Counting Mats  
6 resources  
Valentine's Day Math & Literacy Centers  
Valentine's Day Preschool Unit  
Valentine's Day Circle Time Games  
Play to Learn Preschool

## VALENTINE'S DAY PRESCHOOL ACTIVITIES



# Have fun playing and learning with your students!



## Meet Jamie

Jamie is the founder and C.E.O of Play to Learn Preschool. She has her bachelor's degree in Early Childhood Education and a master's degree in reading education. She has taught in both public and private schools and works tirelessly to create meaningful and delightful preschool experiences for both her virtual and in-person preschool students.

### ADDITIONAL RESOURCES:

