

# EVERYTHING IS PLANNED FOR YOU!

## Valentine's Day Beginning Sounds

Young learners connect pictures to their beginning sounds while matching uppercase and lowercase letters with this engaging Valentine's Day activity. Featuring mailbox picture cards and colorful heart-shaped letters, it's perfect for preschool and kindergarten.



### Learning Objectives:

- Beginning Sounds and Letter Recognition** – Students will identify uppercase and lowercase letters A-Z and their beginning sounds, reinforcing early literacy skills through hands-on practice.
- Fine Motor Development** – Students will develop their fine motor skills as they handle, align, and match the cards. This activity supports hand-eye coordination and finger strength, essential for writing and other classroom tasks.

### Preparation:

- **Print** the pages on standard paper or cardstock for durability.
- **Laminate** the sheets for reuse.
- **Cut** along the lines to create individual mailboxes and hearts.
- **Hot Glue** small clothes pins to the back of the hearts.

### How to Use:

Lay out the mailbox picture cards in one area and the heart-shaped uppercase and lowercase letter cards in another. A student chooses a mailbox picture card and identifies the beginning sound of the picture. Next, they search for both the uppercase and lowercase heart-shaped letters that match the sound and clip them to the mailbox. Once the matches are complete, they can move on to another mailbox card.

### Other Fun Uses:

- **Sensory Bin Match:** Place the picture cards in a sensory bin and have students search for them to match with the correct heart-shaped letter.
- **Alphabetical Order:** Have students arrange the heart-shaped letters in alphabetical order before matching them with sounds.
- **Write and Match:** After finding the correct matches, have students write the uppercase and lowercase letters on a whiteboard next to the picture to practice letter formation.

### Storage Tips:

Keep the cards in a small basket or on a tray for easy access. Store in a zippered bag when not in use.

©Play to Learn Preschool



INTERACTIVE LITERACY CENTER

Step-by-step directions for the activity.

Extension ideas

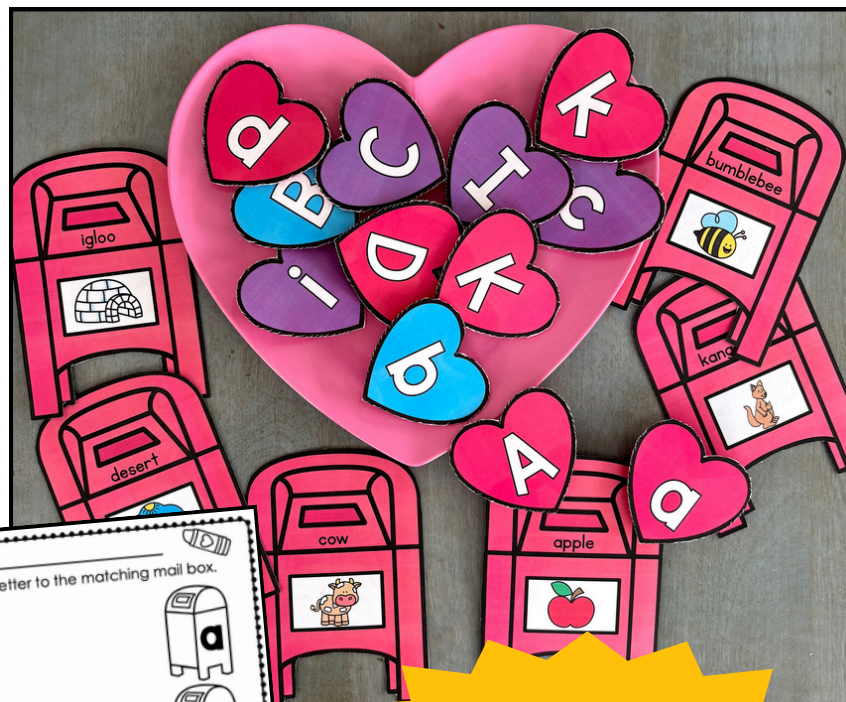
PRACTICE SHEET

Name: \_\_\_\_\_

Trace a line from the letter to the matching mail box.

robot	
ant	

©Play to Learn Preschool



UPPER & LOWER CASE LETTERS



# LOOKING FOR EVEN MORE VALENTINE'S DAY FUN?

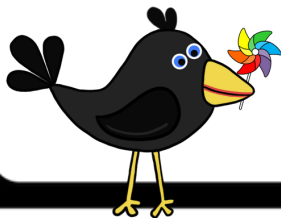
SAVE

SAVE \$ WITH A BUNDLE

6 resources

## VALENTINE'S DAY PRESCHOOL ACTIVITIES

Play to Learn Preschool



# Have fun playing and learning with your students!



## Meet Jamie

Jamie is the founder and C.E.O of Play to Learn Preschool. She has her bachelor's degree in Early Childhood Education and a master's degree in reading education. She has taught in both public and private schools and works tirelessly to create meaningful and delightful preschool experiences for both her virtual and in-person preschool students.

### ADDITIONAL RESOURCES:

